



LIRR Emergency Procedures & Familiarization

presented by

Brian P. Ludica

Training Specialist
Safety & Emergency Response Training
Long Island Rail Road

Fred Loiacono

Assistant Fire Marshal
OFM – Corporate Safety Dept.
Long Island Rail Road



LEADERSHIP
SEMINAR SERIES

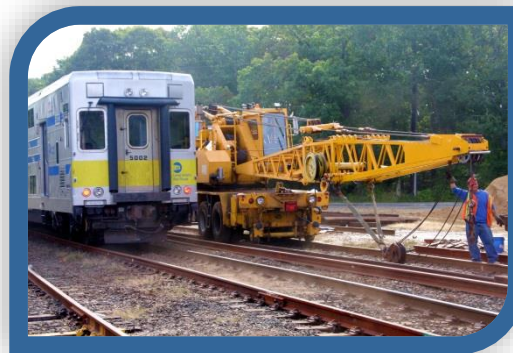
LIRR Operations

- 735 Daily Scheduled Trains
- 230+ Additional Unscheduled Trains
- 301,000 Daily Passengers
- 594 Miles of Track
- 124 Passenger Stations
- 11 Branches



LIRR Equipment

- 1006 Multiple Unit Electric Cars (M-7, M-3)
- 24 Diesel Electric Locomotives (DE 30)
- 21 Dual Mode locomotives (DM 30)
- 134 Bi-Level Coaches
- 300 Freight Cars Per Day
- Various Support Equipment (Track Cars)



Expect the Movement of Trains

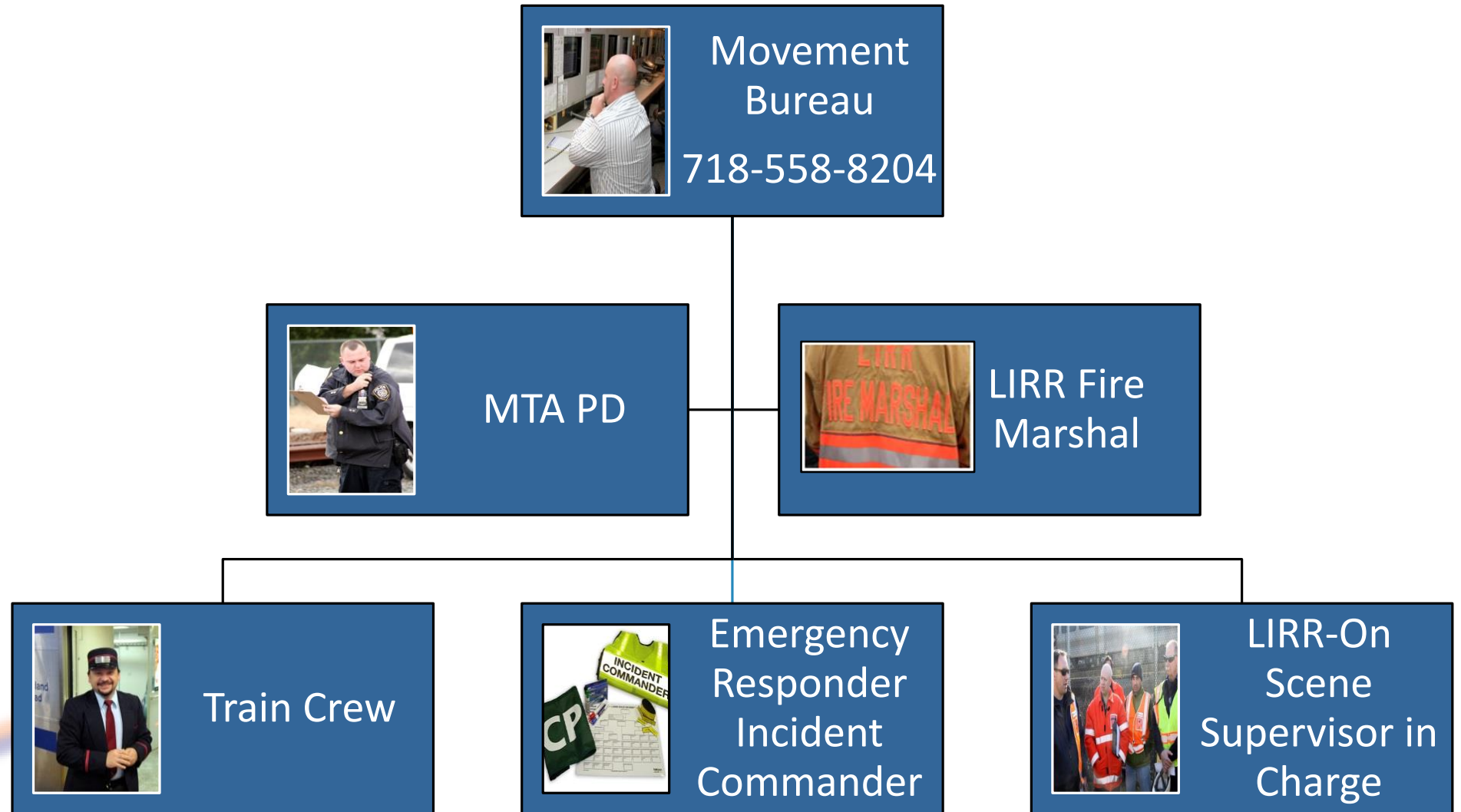
- At Any Time
- On Any Track
- In Either Direction



Expect the Movement of Trains



Emergency Response Operations



Emergency Response Operations

Communication with LIRR Movement Bureau (718) 558-8204

Incident Commander

- Location and type of equipment involved and what LIRR action is required
- Name and rank of Incident Commander, location of Command Post and Staging Area



Emergency Response Operations

Communication with LIRR Movement Bureau (718) 558-8204

Stop Order - *(also known as a Block)* This will stop all trains on a specific track in a specific area.

Slow Order - Will require all trains to reduce speed on a specific track in a specific area.

Third Rail Power Removal- *(Does not stop Train Movement)* After receiving confirmation from LIRR Movement Bureau this removes third rail power from a specific track in a specific area.

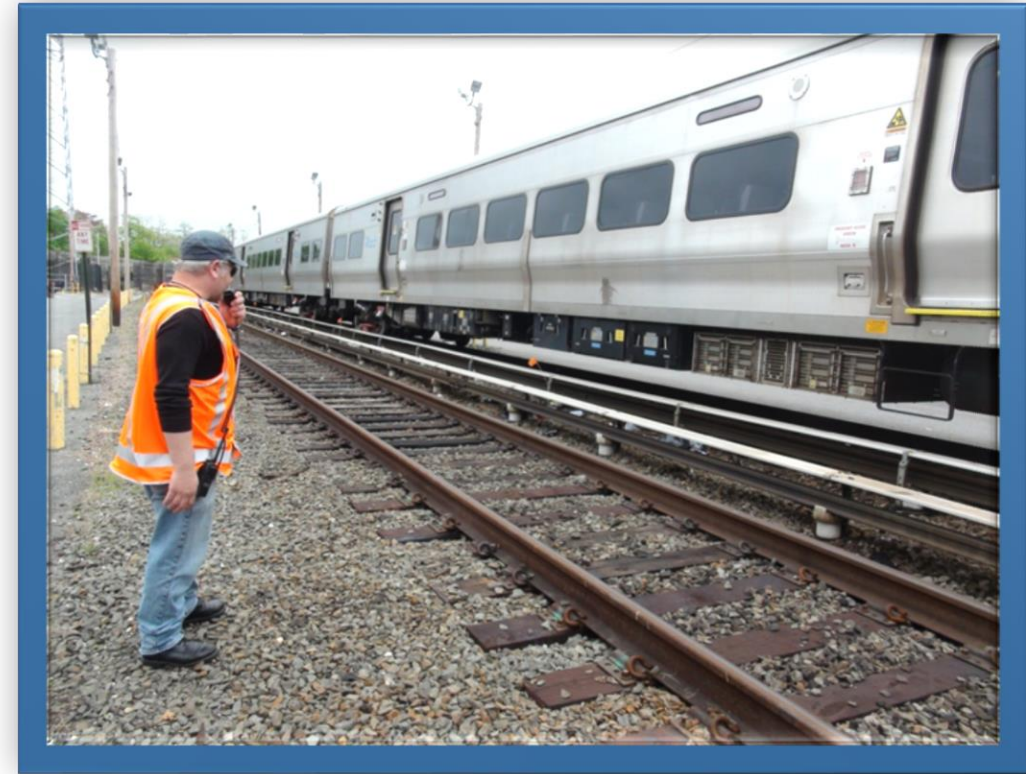


Emergency Response Operations

Scene Safety

Establish a Safety Watch

- 2500 Feet in each direction
- Place flares on tracks
- Must be in uniform or PPE
- Flashlight
- Portable Radio



Emergency Response Operations

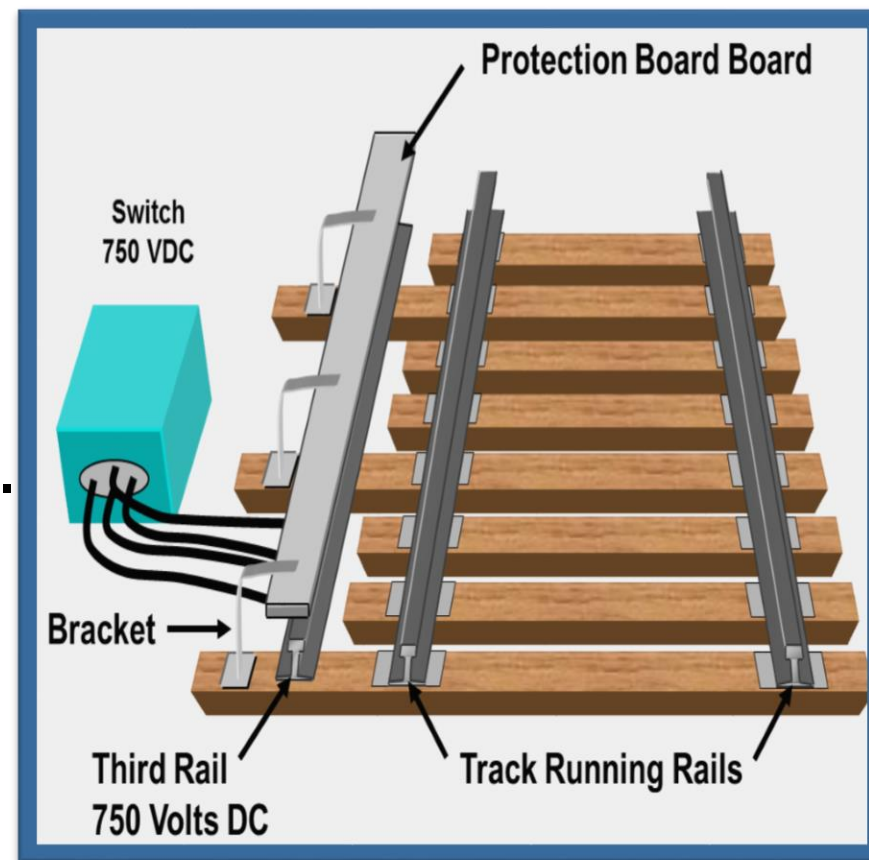
Safety Awareness – Track Structure

- **Railroad Tracks** - Wood or Concrete ties, steel rail, with fasteners, clips, spikes, plates, bars and bolts.
- **Track Bed** - Rests on sub grade on crushed stones (Ballast)
- **Steel Rail** - Carries **RETURN** current, signal power. Not dangerous to life unless rail broken or bonds are loose.



Emergency Response Operations Safety Awareness – Third Rail

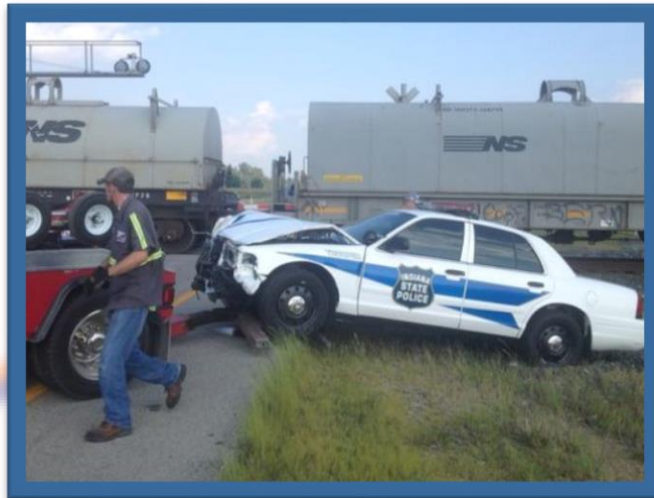
- 750 Volts **CONFIRMED** by LIRR
- Movement Bureau to be de-energized, unless **CONFIRMED** by LIRR Movement.
- ~~Bureau to be de-energized~~ do all operating personnel at the scene.
- **WAIT FOR CONFIRMATION** from LIRR Movement Bureau before beginning operations on LIRR Right of Way or equipment.



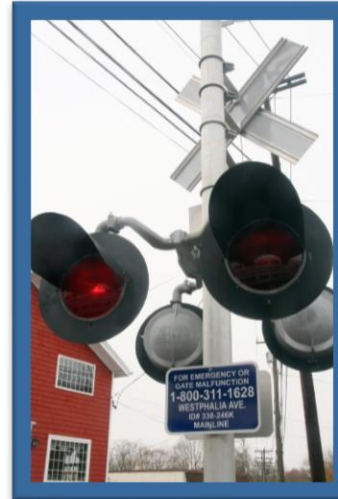
Emergency Response Operations

Safety Awareness-Grade Crossings

- **Never** go around gates that are down or cross tracks with warning signals activated
- **Never** attempt to go around gates even when responding to emergencies



Picture Indystar.com



Picture Firefighterspot.com



Emergency Response Operations Safety Awareness-Grade Crossings



LIRR Equipment- Passenger Cars

M-3



Third Rail Powered
Operate in married pairs
85 ft. long, 93,520 Lbs.

M-7



Third Rail Powered
Operate in married pairs
85 ft. long, 128,300 Lbs.

C-3 (Bi-Level)



No fuel source
Needs locomotive to
operate
85 ft. long, 150,000 Lbs.



Emergency Response Operations Passenger Service Locomotives



DE- 30 Locomotives

400 Series Number

292,000 LBS

3,400 Gallons Diesel Fuel



DM- 30 Locomotives

500 Series Number

Dual Mode-Third Rail Contact Shoes

299,000 LBS

2400 Gallons Diesel Fuel



Emergency Response Operations

Road/Yard Service Locomotives



E-10

Road Number Series
100/107
Weight 235,000 lbs.
1,000 Gallons of Fuel



LIRR/NYAR E-15

Road Number Series
150/172
Weight 248,000
1,499 Gallons of Fuel



NYAR E-20

Road Number Series
261/271
Weight 268,500 lbs.
3,000 Gallons of Fuel



Emergency Response Operations

Freight Operations

- Operated by New York and Atlantic Railway (NYAR)
- All Movements Controlled by LIRR Movement Bureau
- Operates under LIRR Rules and Regulations



Additional Training Options

- Multiple Agency Drills / Training
- Safety around power operated switches
- Stations / Facilities
- Stabilization
- Manual Door Operation
- Other Entry/Egress
- Emergency Equipment
- Emergency Shutdown
- Freight Hazards
- Emergency Incident Photos / Discussions
- Hands-on Training



QUESTIONS? & ANSWERS!



**LEADERSHIP
SEMINAR SERIES**